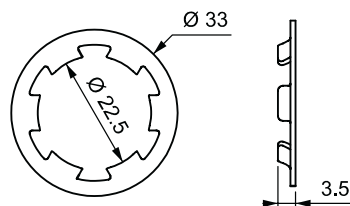
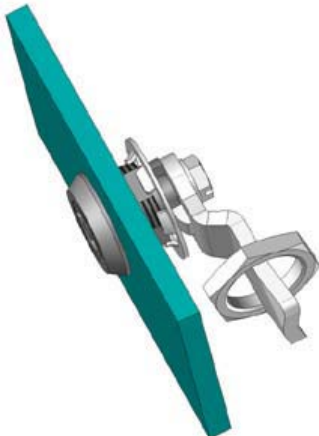
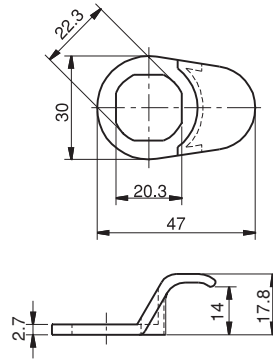


MONTAJ ÖLÇÜSÜ  
FIXING

ÜRÜN KODU / PRODUCT CODE

061	1	-	1	-	DD	-	CC
GRUP KODU GROUP CODE	MALZEME MATERIAL		YÜZEY FINISH		GÖBEK KODU DRIVER CODE		DİL CAM



TOZ KAPAĞI  
DUST CAP

060 A4



Kilit ile sipariş edilir  
Please order with lock.

MALZEME

KOVAN : Zamak DIN-EN 1774-ZnAl4Cu1  
GÖBEK : Zamak DIN-EN 1774-ZnAl4Cu11  
KAPAK : Poliüretan  
YÜZEY : Krom

MATERIAL

HOUSING : Zamak DIN-EN 1774-ZnAl4Cu1  
DRIVER : Zamak DIN-EN 1774-ZnAl4Cu11  
CAP : Polyurethane  
FINISH : Chrome

KİLİT TUTAMAĞI  
LOCK HANDLE

060 A2



MALZEME / MATERIAL

Polyamide DIN-EN ISO 1043-1 PA6 GFR 30

SABİTLEYİCİ  
FIXING DEVICE

060 A3



MALZEME / MATERIAL

Çelik / Steel

YÜZEY / FINISH

Çinko / Zinc plated