

DİLİ YAYLI KİLİT
QUARTER TURN WITH SPRING CAM

160



(RH)



(LH)

UYGULAMA ALANLARI

Elektrik panoları, makine kapakları

MALZEME

KOVAN : Zamak DIN-EN 1774-ZnAl4Cu1
GÖBEK : Zamak DIN-EN 1774-ZnAl4Cu1
CONTA : Kauçuk
YÜZEY : Krom

APPLICATIONS

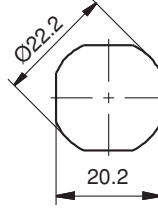
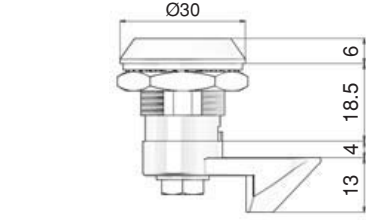
Electric panels, machinery covers

MATERIAL

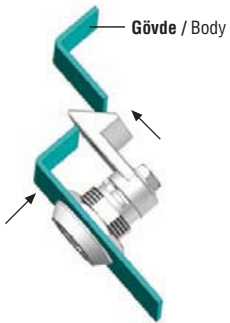
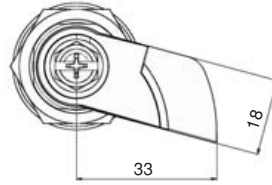
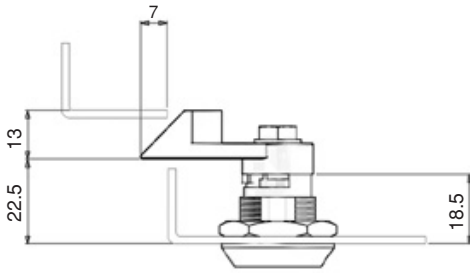
HOUSING : Zamak DIN-EN 1774-ZnAl4Cu1
DRIVER : Zamak DIN-EN 1774-ZnAl4Cu1
GASKET : Rubber
FINISH : Chrome

**Bu Kilitte, IP 65 ,
yaylı dil uygulaması
sebebiyle sağlanamaz.**

There is no IP 65
for this lock because
of spring loaded cam.



MONTAJ ÖLÇÜSÜ
FIXING



Position 1

Kapak itilir.
Push the door



Position 2

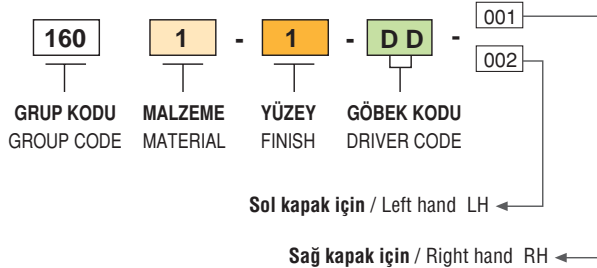
Kapak kapatılırken dil gövdeye temas
ederek yukarı hareket eder.
Cam will move upright when touches the body



Position 3

Dil, gövde ile temastan kurdulduktan sonra
içinde bulunan yay sayesinde aşağı hareket
eder ve kapak kilitletir.
When the cam is free, cam will move downright
by spring and the door will be locked.

ÜRÜN KODU / PRODUCT CODE



KOD / CODE	MALZEME / MATERIAL	M	YÜZEY / FINISH	F
160 1-1-DD	Zamak	1	Krom / Chrome	1