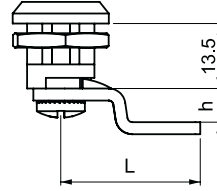
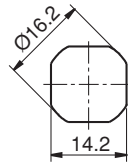


KOVANLAR / HOUSINGS

ZAMAK- KROM / ZAMAK -CHROME



ZAMAK- BOYALI / ZAMAK - BLACK COATED



PLASTİK / POLYAMIDE



MONTAJ ÖLÇÜSÜ
FIXING

066



UYGULAMA ALANLARI

Elektrik panoları, makine kapakları

MALZEME

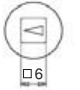



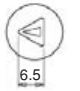







KOVAN : Zamak DIN-EN 1774-ZnAl4Cu1
veya PA6 GFR 30
GÖBEK : Zamak DIN-EN 1774-ZnAl4Cu1
or PA6 GFR 30
DİL : Çelik
CONTA : Kauçuk
YÜZEY : Krom veya siyah boya

APPLICATIONS

Electric panels, machinery covers

MATERIAL

HOUSING : Zamak DIN-EN 1774-ZnAl4Cu1
or PA6 GFR 30
DRIVER : Zamak DIN-EN 1774-ZnAl4Cu1
or PA6 GFR 30
CAM : Steel
GASKET : Rubber
FINISH : Chrome or black coated

GÖBEKLER DRIVERS	DD	ZAMAK- KROM KAPLAMALI ZAMAK -CHROME PLATED	ZAMAK- BOYALI ZAMAK BLACK COATED	PLASTİK POLYAMIDE
	26			
	37			
	42			

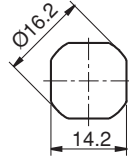
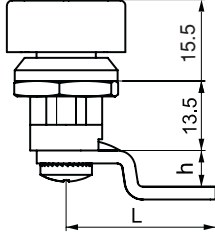


h x L	CC
0 x 33	10
7 x 30	11
0 x 25	20
6 x 25	21
- 6 x 25	22

ÜRÜN KODU / PRODUCT CODE

066	M	-	F	-	DD	-	CC
GRUP KODU GROUP CODE	MALZEME MATERIAL		YÜZEY FINISH		GÖBEK KODU DRIVER CODE		DİL CAM

KOD / CODE	MALZEME / MATERIAL	M	YÜZEY / FINISH	F
066 1-1-DD-CC	Zamak	1	Krom / Chrome	1
066 1-2-DD-CC			Siyah boya / Black Coated	2
066 2-0-DD-CC	Plastik / Polyamide	2	Kaplamasız / No Finish	0



MONTAJ ÖLÇÜSÜ
FIXING

MİNİ YAYLI PANO KİLİDİ (Kelebek Anah.)
MINI CAM LOCK WITH WING KNOB

166



UYGULAMA ALANLARI

Elektrik panoları, makine kapakları

MALZEME

KOVAN : Zamak DIN-EN 1774-ZnAl4Cu1
or PA6 GFR 30

KELEBEK : Zamak DIN-EN 1774-ZnAl4Cu1
or PA6 GFR 30

DİL : Çelik

CONTA : Kauçuk

YÜZEY : Krom veya siyah boya

APPLICATIONS

Electric panels, machinery covers

MATERIAL

HOUSING : Zamak DIN-EN 1774-ZnAl4Cu1
Or PA6 GFR 30

KNOB : Zamak DIN-EN 1774-ZnAl4Cu1
Or PA6 GFR 30

CAM : Steel

GASKET : Rubber

FINISH : Chrome or black coated

166 1-1-CC
ZAMAK- KROM / ZAMAK CHROME



166 1-2-CC
ZAMAK- BOYALI / ZAMAK BLACK COATED



166 2-0-CC
PLASTİK / POLYAMIDE



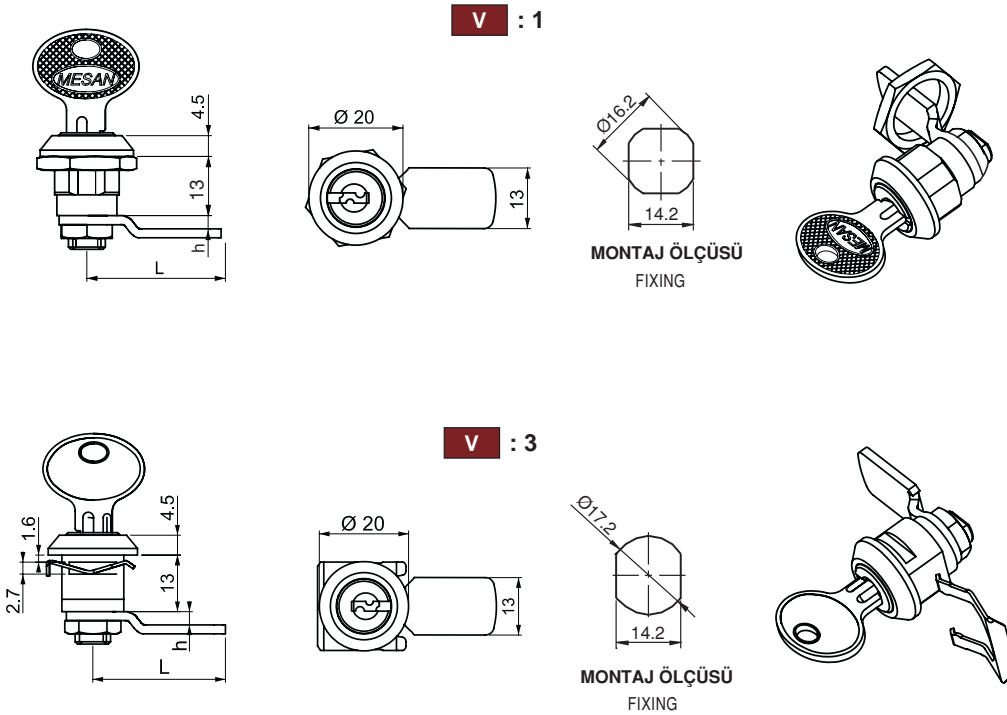
ÜRÜN KODU / PRODUCT CODE

166	M	-	F	-	CC
GRUP KODU GROUP CODE	MALZEME MATERIAL		YÜZEY FINISH		DİL CAM

KOD / CODE	MALZEME / MATERIAL	M	YÜZEY / FINISH	F
166 1-1-CC	Zamak	1	Krom / Chrome	1
166 1-2-CC			Siyah boya / Black Coated	2
166 2-0-CC			Kaplamasız / No Finish	0
	Plastik / Polyamide	2		



h x L	CC
0 x 33	10
7 x 30	11
0 x 25	20
6 x 25	21
- 6 x 25	22



ÜRÜN KODU / PRODUCT CODE

057	V	DD	CC
GRUP KODU GROUP CODE	VERSİYON VERSION	FİŞE CYLINDER	DİL CAM

MINİ MANDALLI KİLİT
MINI CAM LOCK

057



UYGULAMA ALANLARI

Çelik masalar, çelik dolaplar, posta kutuları

MALZEME

KOVAN : Zamak DIN-EN 1774-ZnAl4Cu1
DİL : Çelik

APPLICATIONS

Metal drawers, metal cabinets, post boxes

MATERIAL

HOUSING : Zamak DIN-EN 1774-ZnAl4Cu1
CAM : Steel

KİLİT ÖZELLİKLERİ / LOCK SPECIFICATIONS

		V
Somun ile bağlanabilen 90° dönüşlü	/	Fixed by nut 90° rotation
Segman ile bağlanabilen 90° dönüşlü	/	Fixed by clips 90° rotation

Fişe / Cylinder

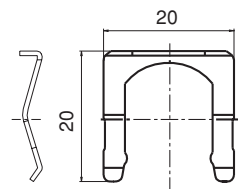
ÖZELLİKLER / SPECIFICATIONS

		DD
	Aynı şifre (Birbirini açan) / Keyed alike	01
	Farklı şifre (Birbirini açmayan) / Keyed differ	02

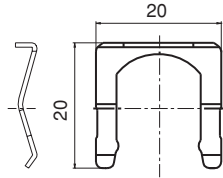
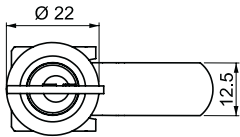
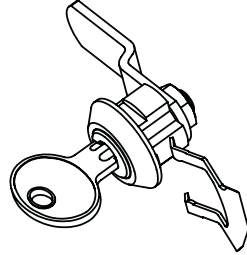
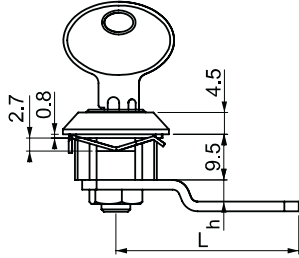
DİLLER / CAMS

CC	10	20	21	22	30	50	Kancalı dil Hook cam	40
	h	0	3	7	0	0		0
	L	24	31	30	26	36		31

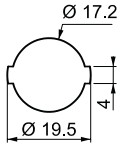
Segman / Clip



Kalınlık / Thickness 0.7 mm




Kalınlık / Thickness 0.7 mm

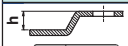
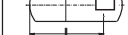


MONTAJ ÖLÇÜSÜ
FIXING

ÜRÜN KODU / PRODUCT CODE

157	01	-	CC
GRUP KODU GROUP CODE	FİŞE CYLINDER		DİL CAM

Fişe / Cylinder	ÖZELLİKLER / SPECIFICATIONS	DD
	Aynı şifre (Birbirini açan) / Keyed alike	01

DİLLER / CAMS			
CC	→	23	24
	h	1	4.5
	L	38	38

MINİ MANDALLI KİLİT
MINI CAM LOCK

157

NEW



UYGULAMA ALANLARI

Çelik masalar, çelik dolaplar, posta kutuları

MALZEME

KOVAN : Zamak DIN-EN 1774-ZnAl4Cu1

DİL : Çelik

APPLICATIONS

Metal drawers, metal cabinets, post boxes

MATERIAL

HOUSING : Zamak DIN-EN 1774-ZnAl4Cu1

CAM : Steel