

## PAKO KİLİT PACO LOCK

162



### APPLICATIONS

Electric panels, machinery covers

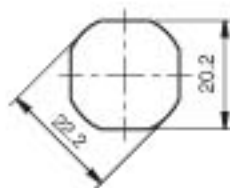
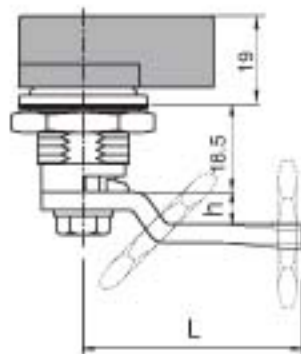
### MATERIAL

BODY : Zamak DIN-EN 1774-ZnAlCu1

CAM : Steel or PA

GASKET : Rubber

FINISH : Chrome



MONTAJ ÖLÇÜSÜ  
FIXING

ÜRÜN KODU  
PRODUCT CODE

162 - CC

GRUP KODU  
GROUP CODE

DİL  
CAM