

ÜRÜN KODU / PRODUCT CODE

057	V	DD	CC
GRUP KODU GROUP CODE	VERSİYON VERSION	FİŞE CYLINDER	DİL CAM

MINİ MANDALLI KİLİT
MINI CAM LOCK

057



UYGULAMA ALANLARI

Çelik masalar, çelik dolaplar, posta kutuları

MALZEME

KOVAN : Zamak DIN-EN 1774-ZnAl4Cu1
DİL : Çelik

APPLICATIONS

Metal drawers, metal cabinets, post boxes

MATERIAL

HOUSING : Zamak DIN-EN 1774-ZnAl4Cu1
CAM : Steel

KİLİT ÖZELLİKLERİ / LOCK SPECIFICATIONS

KİLİT ÖZELLİKLERİ / LOCK SPECIFICATIONS		V
Somun ile bağlanabilen 90° dönüşlü	/ Fixed by nut 90° rotation	1
Segman ile bağlanabilen 90° dönüşlü	/ Fixed by clips 90° rotation	3

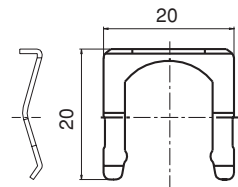
Fişe / Cylinder ÖZELLİKLER / SPECIFICATIONS

Fişe / Cylinder	ÖZELLİKLER / SPECIFICATIONS	DD
	Aynı şifre (Birbirini açan) / Keyed alike	01
	Farklı şifre (Birbirini açmayan) / Keyed differ	02

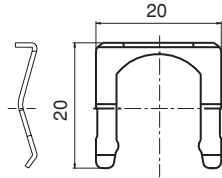
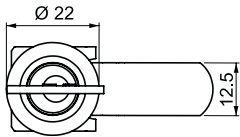
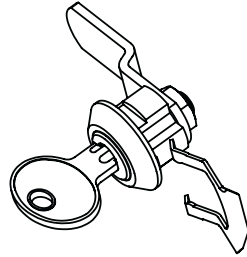
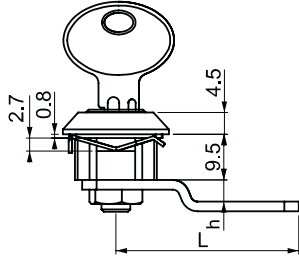
DİLLER / CAMS

CC	10	20	21	22	30	50	Kancalı dil Hook cam	40
	h	0	3	7	0	0		0
	L	24	31	30	26	36		31

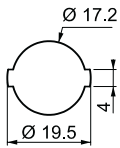
Segman / Clip



Kalınlık / Thickness 0.7 mm




Kalınlık / Thickness 0.7 mm


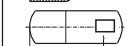


MONTAJ ÖLÇÜSÜ
FIXING

ÜRÜN KODU / PRODUCT CODE

157	01	-	CC
GRUP KODU GROUP CODE	FİŞE CYLINDER		DİL CAM

Fişe / Cylinder	ÖZELLİKLER / SPECIFICATIONS	DD
	Aynı şifre (Birbirini açan) / Keyed alike	01

DİLLER / CAMS			
CC	→	23	24
	h	1	4.5
	L	38	38

MINİ MANDALLI KİLİT
MINI CAM LOCK

157

NEW



UYGULAMA ALANLARI

Çelik masalar, çelik dolaplar, posta kutuları

MALZEME

KOVAN : Zamak DIN-EN 1774-ZnAl4Cu1

DİL : Çelik

APPLICATIONS

Metal drawers, metal cabinets, post boxes

MATERIAL

HOUSING : Zamak DIN-EN 1774-ZnAl4Cu1

CAM : Steel