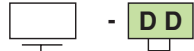


030 - 031  
MONTAJ ÖLÇÜSÜ  
Fixing

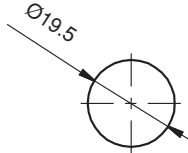
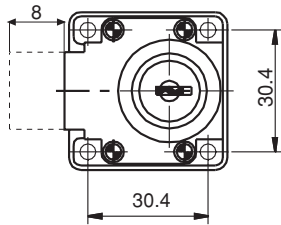
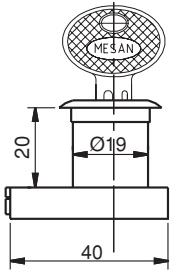
ÜRÜN KODU  
PRODUCT CODE



GRUP KODU FİŞE  
GROUP CODE CYLINDER

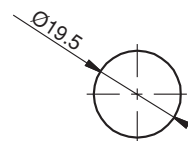
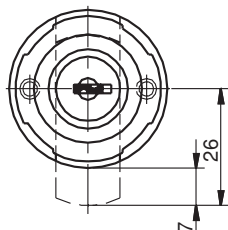
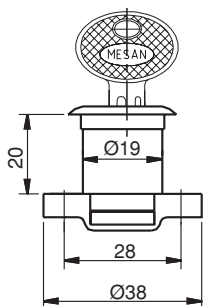
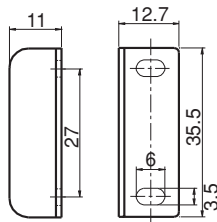
ÖZELLİKLER / SPECIFICATIONS

	DD
Aynı şifre (Birbirini açan) / Keyed alike	01
Farklı şifre (Birbirini açmayan) / Keyed differ	02



032  
MONTAJ ÖLÇÜSÜ  
Fixing

030 A1



033  
MONTAJ ÖLÇÜSÜ  
Fixing

ÇEKMECE KİLİDİ (Krom, Sarı kaplamalı)  
FURNITURE LOCK (chrome or brass plated)

030



031

ÇEKMECE KİLİDİ (Kare tabanlı)  
FURNITURE LOCK (Square based)

032



MALZEME

GÖVDE : Zamak DIN-EN 1774-ZnAl4Cu1  
DİL : Zamak DIN-EN 1774-ZnAl4Cu1  
AYNA SACI: Çelik

MATERIAL

BODY : Zamak DIN-EN 1774-ZnAl4Cu1  
LATCH : Zamak DIN-EN 1774-ZnAl4Cu1

ÇEKMECE KİLİDİ (Plastik)  
FURNITURE LOCK (Plastic)

033



MALZEME

GÖVDE : Polyamide DIN-EN ISO 1043-1  
PAG GFR 30  
DİL : Çelik

MATERIAL

BODY : Polyamide DIN-EN ISO 1043-1  
PAG GFR 30  
LATCH : Steel