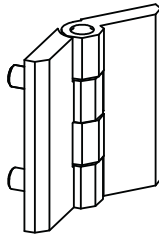


LEAF HINGE

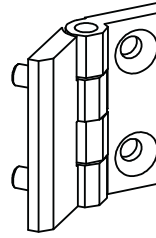
099



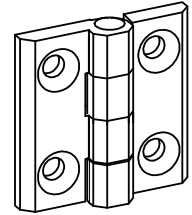
LH/RH



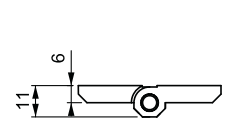
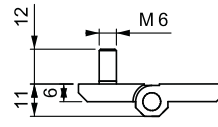
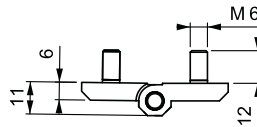
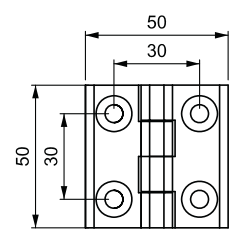
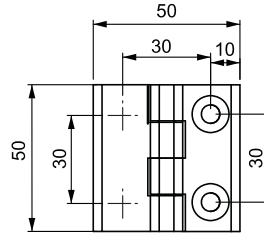
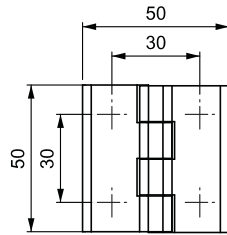
V : 1



V : 2



V : 4



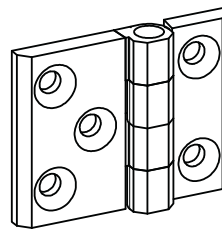
- Generally used for plain / flush mounted doors.
- Stud versions fitted with M6 x 12mm threaded stud.
- Stainless steel (AISI 304) hinge pin. Maximum hinge rotation 270°.
- Available in three dimensions: 50 mm x 50 mm, 50 mm x 63 mm and 50 mm x 76 mm. Hole or stud fixing.

APPLICATIONS

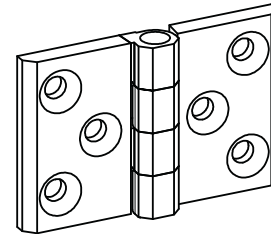
Electric panels, build-in covers.

MATERIAL

BODY: Zamak DIN-EN 1774-ZnAl4Cu1
PIN : Stainless Steel

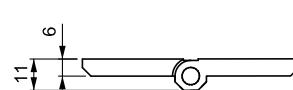
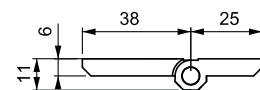
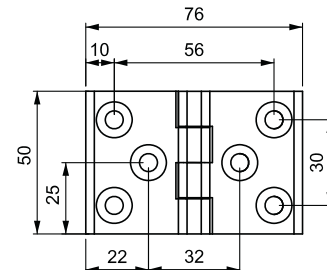
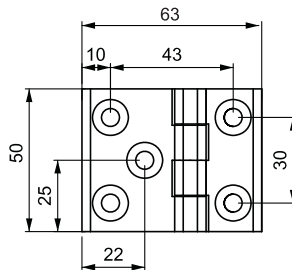


V : 5



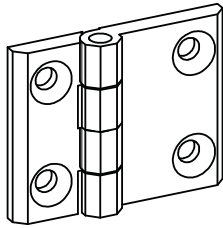
V : 6

Hinge Rotation Angle

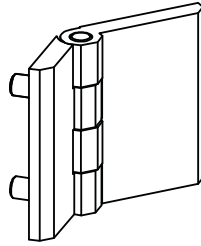


099

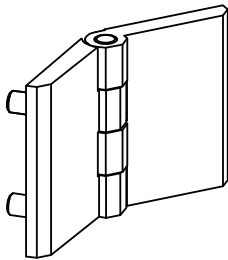
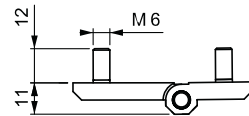
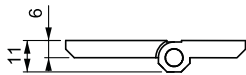
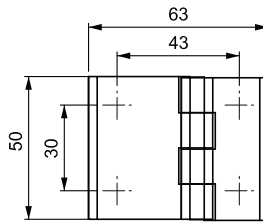
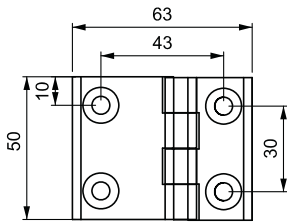
LEAF HINGE



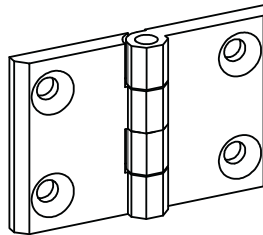
V : 7



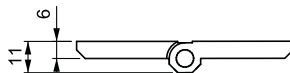
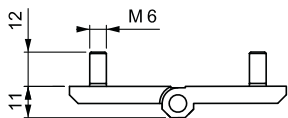
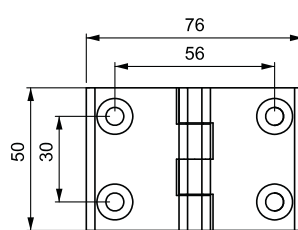
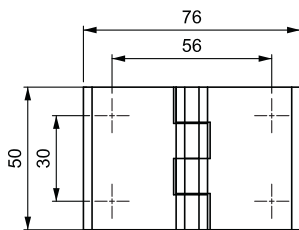
V : 8



V : 9



V : 10



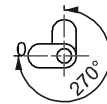
APPLICATIONS

Electric panels, build-in covers.

MATERIAL

BODY: Zamak DIN-EN 1774-ZnAl4Cu1
PIN : Stainless Steel

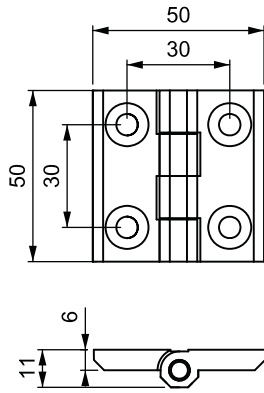
Hinge Rotation Angle



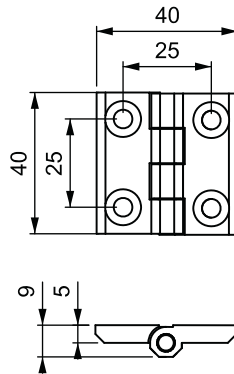
PRODUCT CODE

099 1 - F - V
GROUP CODE MATERIAL FINISH VERSION

MATERIAL	M	FINISH	F
Zamak	1	Chrome	1
		Black Coated	2



099



299

299

LEAF HINGE

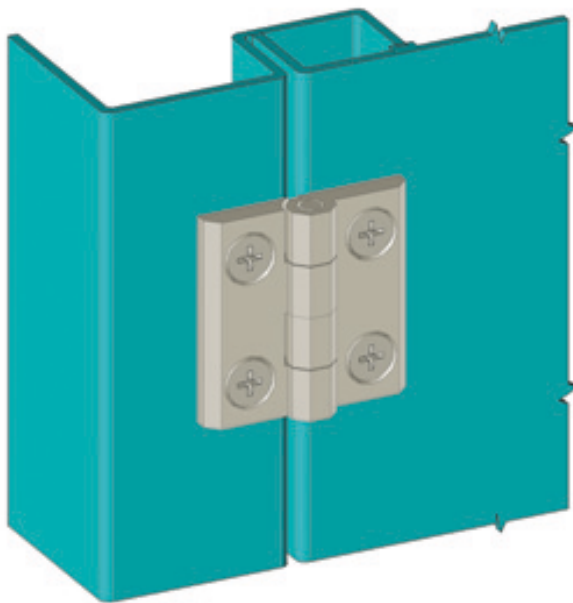
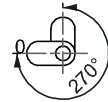


LH/RH



40X40

Hinge Rotation Angle



099

LEAF HINGE



50X50

Hinge Rotation Angle



PRODUCT CODE

099 - 4 - 0 - 4

GROUP CODE MATERIAL FINISH VERSION

PRODUCT CODE

299 - 4 - 0 - 3

GROUP CODE MATERIAL FINISH VERSION