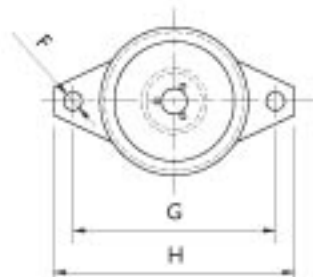
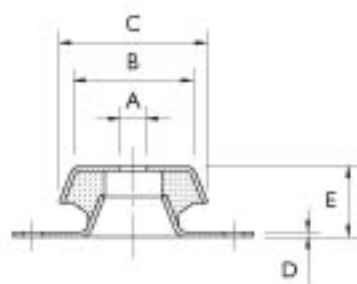
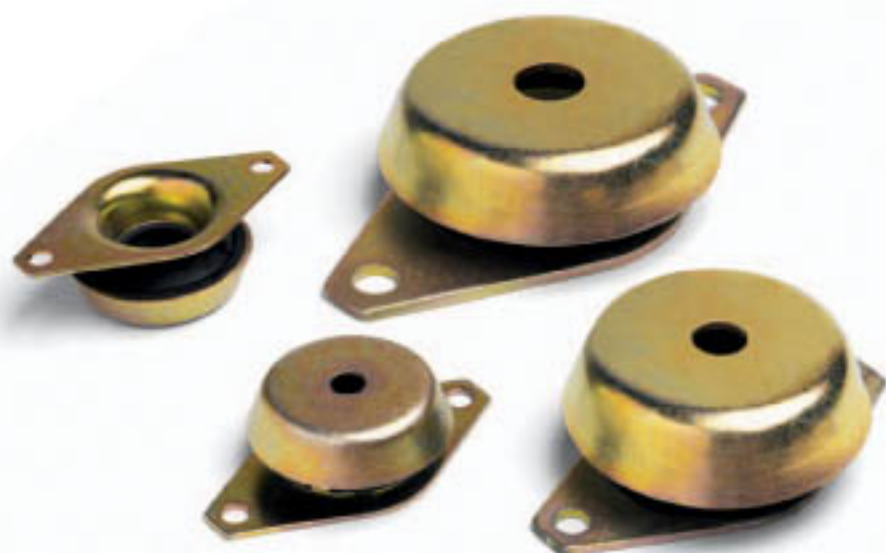


SUPPORTO A CAMPANA "BELL-SHAPED" MOUNTING

ART. 103 SERIE **SC**



GOMMA / RUBBER PART

Materiale / Material

Miscela gomma NR/SBR
NR/SBR compound

PARTE METALLICA / METAL PART

Materiale / Material

Lamiere acciaio zincata gialla
Zinc plated yellow

Tipo / Type

Con foro passante
With through hole

SUPPORTO A CAMPANA STANDARD 60 SHORE A STANDARD "BELL-SHAPED" MOUNTING 60 SHORE A

Codice Code	C	G	A	B	F	E	H x D H x D	Car. stat daN Dead load daN	Cedim. mm Deflection mm
103.SC50	48	68	8,5	38	6,5	23	80x1,5	102	3,04
103.SC60	62	85	10,5	50	8,5	30	100x2	214	3,66
103.SC90	92	110	16,5	72	10,5	44	130x3	343	3,02
103.SC120	119	160	24,5	95	16,5	48	190x4	641	3,71
103.SC160	158	200	30,5	125	16,5	60	230x5	1211	3,36

SUPPORTO A CAMPANA TENERO 45 SHORE A SOFT "BELL-SHAPED" MOUNTING 45 SHORE A

Codice Code	C	G	A	B	F	E	H x D H x D	Car. stat daN Dead load daN	Cedim. mm Deflection mm
103.SC50-45	48	68	8,5	38	6,5	23	80x1,5	96	3,18
103.SC60-45	62	85	10,5	50	8,5	30	100x2	192	5,03
103.SC90-45	92	110	16,5	72	10,5	44	130x3	346	5,05
103.SC120-45	119	160	24,5	95	16,5	48	190x4	661	4,92

MINI SUPPORTO A CAMPANA CON PERNO MINI "BELL-SHAPED" MOUNTING WITH BOLT

ART. 103 SERIE **SC40**



Codice Code	H	C	D	E	A x B A x B	G x F G x F	Carico max daN Maximum Load daN
103.SC40	55	40	23,00	17	M10x20	M10x13	150

Durezza 60 Shore A
60 shore A Hardness

